

Box for 6" x 6" Designer Series Paper® stacks

Paper	Catalog*	Page	Item #	Price	Sizes
White backing from DSP				Bottom	12" x 12"
White backing				Top	12" x 10½"
White backing				Bottom	(2) 7" x 2¾"
White backing				Sides	(2) 2½" x 2¾"
DSP of your choice				A	8¼" x 5"
DSP				B	12" x 7"
DSP				C	8¼" x 3¼"
DSP				D	12" x 5¼"
Embellishments	Catalog*	Page	Item #	Price	Quantity
Ribbon to coordinate with DSP					36"
Tools & Accessories					
	Catalog*	Page	Item #	Price	
Fast Fuse Adhesive	16-17	182	129026	\$10.00	
Or Tear & Tape Adhesive	16-17	182	138995	\$7.00	
Bone folder	16-17	185	102300	\$6.95	
Multipurpose Liquid Glue	16-17	182	110755	\$4.00	
Stampin' Trimmer	16-17	189	126889	\$30.00	

*16-17 = Annual Catalog H 16 = Holiday Mini Catalog O 17 = Occasions Mini Catalog
 SAB 17 = Sale-a-Bration Promotion Catalog (1 free item for each \$50 purchased products)

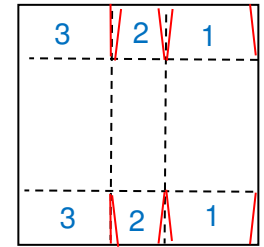
By Bev Adams, bevadams@verizon.net, www.BevAdams.com

Images © Stampin' Up! 1990 - Current

Notes

Box Bottom

1. Score the cardboard at 4¾" and 7¼".
2. Turn 90° then score at 2½" and 9½".
3. Crease well.
4. Trim the tabs as shown in red. Note the left line between 2 and 3 is not slanted.
5. Fold the flaps in the order shown and adhere.



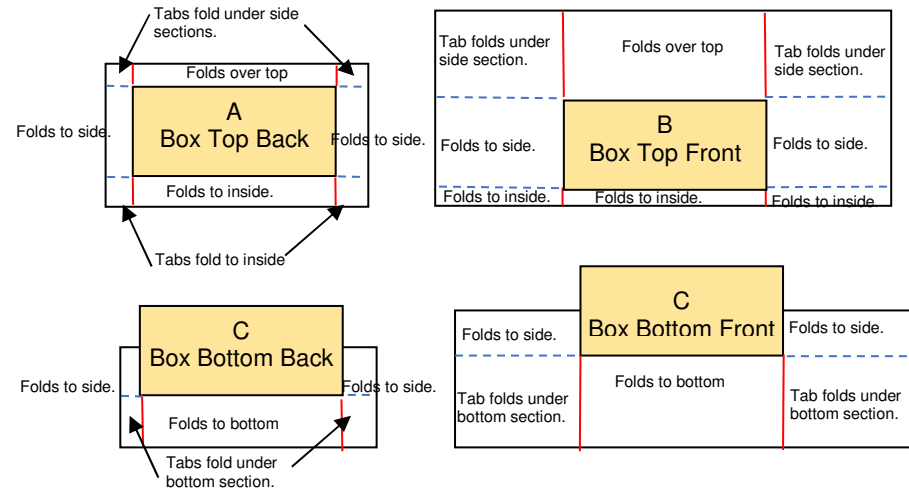
Box Top

6. With the long side at the top, score the cardboard at 2⅜" on both sides.
7. Turn 90° then score at 4" both sides.
8. Crease well.
9. Trim the tabs as shown in red. Note the left line between 2 and 3 is not slanted.
10. Fold the flaps in the order shown and adhere.

Designer Series Paper®

For each piece:

11. Put the glue on the side of the box.
 - a. Adhere the box as shown.
 - b. The snip as shown with the red lines.
12. Snip as shown with the snips ending at the corner of the box.



13. Adhere the sides and then the tabs.
14. For the box top, fold over the top and adhere to the box.
15. For the box top, fold the bottom 1/2" inside the box top.
16. For the box bottom, adhere the sides.
17. For the box bottom, fold under the bottom section to the bottom of the box.

