

**Project Planner**

Date: 10/15/16

Rudolph Step Card					
Stamp Sets	Catalog*	Page			
Cookie Cutter Christmas	H 16	6	Polymer	142043	\$21.00
" Bundle	H 16	6	Polymer	143493	\$35.00
Paper	Catalog*	Page	Item #	Price	Sizes
Real Red 8½" x 11"	16-17	171	102482	\$8.00	4¼" x 11"
Real Red					Tiny scrap
Candy Cane Lane DSP	H 16	5	141981	\$11.00	(2) ¾" x 4¼" vert.
Candy Cane Lane DSP					¾" x 4" Cut horiz.
Candy Cane Lane DSP					(2) ¼" x 4" Cut vert.
Whisper White 8½" x 11"	16-17	175	100730	\$9.00	2" x 5½"
Whisper White					3¾" x 4"
Whisper White					Tiny scrap
Crumb Cake 8½"x11"	16-17	170	120953	\$8.00	4" x 4¼"
Crumb Cake					2¾" x 4¼"
Early Espresso 8½"x11"	16-17	170	119686	\$8.00	Tiny scrap
Embellishments	Catalog*	Page	Item #	Price	Quantity
Real Red ⅜" Stitched Satin Ribbon	16-17	178	141693	\$9.00	5"
White Solid Baker's Twine	16-17	179	124262	\$3.00	12"
Real Red Glitter Emboss	H 16	7	142635	\$6.00	
Inks	Catalog*	Page	Item #	Price	
Early Espresso Classic Ink Pad	16-17	170	126974	\$6.50	
VersaMark® Pad	16-17	180	102283	\$8.50	
White Stampin' Chalk Marker	16-17	181	132133	\$3.50	
Tools & Accessories	Catalog*	Page	Item #	Price	
Blocks, if using clear-mount stamp sets					
Clear-Mount Block C (2" x 2¼")	16-17	183	118486	\$7.00	
Clear-Mount Block G (2½" x ¾")	16-17	183	118489	\$4.50	
Adhesive of your choice	16-17	182			
Stampin' Dimensionals®	16-17	182	104430	\$4.00	
Embossing Buddy®	16-17	181	103083	\$6.00	
Seasonal Decorative Masks	H 16	43	141848	\$6.00	
Sponge Brayers	16-17	180	141714	\$8.00	
Cookie Cutter builder punch	H 16	6	140396	\$18.00	
Banner Triple punch	16-17	186	138292	\$23.00	
Scallop Tag Topper Punch	16-17	186	133324	\$23.00	
Classic Label punch	16-17	186	141491	\$18.00	
Heat Tool	16-17	181	129053	\$30.00	

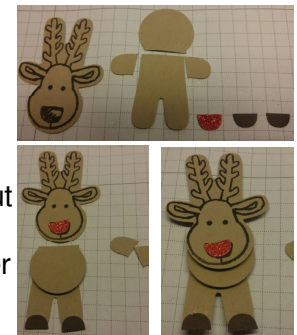
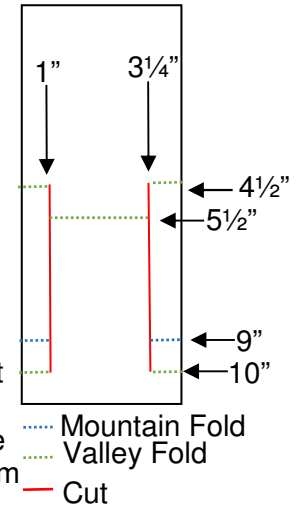
\*16-17 = Annual Catalog H 16 = Holiday Mini Catalog O 17 = Occasions Mini Catalog  
 SAB 17 = Sale-a-Bration Promotion Catalog (1 free item for each \$50 purchased products)

By Bev Adams, [bevadams@verizon.net](mailto:bevadams@verizon.net), [www.BevAdams.com](http://www.BevAdams.com)

Images © Stampin' Up! 1990 - Current

**Notes**

1. Cut and score Real Red card stock as shown in the diagram. Then fold and crease for the card base.
2. Adhere the Designer Series Paper® on the side and bottom panels.
3. Rub the Whisper White strip with the Embossing Buddy. Using the striped Seasonal Mask and the Sponge Brayer, apply VersaMark.
4. Pat the scrap of Real Red card stock on the VersaMark™.
5. Melt the glitter with the Heat Tool. Do not overheat.
6. Cut the top of the Whisper White with the Scallop Tag Topper punch and the bottom with the Banner Triple punch.
7. Thread the red ribbon through the hole. Tie a bow around the ribbon with the Baker's Twine.
8. Stamp the reindeer (antlers toward the bottom) in Early Espresso ink on the Crumb Cake 2¾" x 4¼" card stock. Cut out with the Cookie Cutter Builder punch.
9. Cut a second piece with the Cookie Cutter punch, cut two toes from the Early Espresso scrap, and one toe from the glittered Real Red scrap.
10. Snip the blank cookie as shown.
11. Adhere the cookie parts as shown with Stampin' Dimensionals between the head, body, and leg layers.
12. Color in the antlers with the White Chalk Marker.
13. Put common tape over the extra words on one of the two greeting stamps with Merry Christmas. Ink the stamp in Early Espresso. Remove the tape, then stamp Merry Christmas on the Whisper White scrap. Punch out with the Classic Label punch. Make a handle with a sticky note, then punch again to flag the end.
14. Adhere the greeting and the reindeer to the tag.
15. Adhere the ¼" strips of Designer Series Paper® to the sides of the Whisper White card stock then adhere that to the 4" x 4¼" Crumb Cake. Adhere inside the card.



16. Adhere the  $\frac{3}{4}$ " vertical strips to the sides of the card front.
17. Adhere the  $\frac{3}{4}$ " horizontal strip to the bottom of the card front.
18. Adhere the tag to the center section.

