

Country Floral Gift Box and Card						
Stamp Sets	Catalog*	Page	Wood or polymer		Clear	
Label Me Pretty	18-19	22	143858	\$23.00	143861	\$17.00
Essential Tools & Accessories			Catalog*	Page	Item #	Price
Country Floral Dynamic Folder			SAB 19 2nd Release		149698	\$0.00
Window Box Thinlits™			18-19	221	142762	\$38.00
Pretty Label Punch			18-19	211	143715	\$18.00
Sponge Brayers (optional)			18-19	203	141714	\$8.00
Stampin' Spritzers			18-19	203	126185	\$3.00
Or Stampin' Mist® Stamp Cleaner			18-19	206	102394	\$4.50
Ink			Catalog*	Page	Item #	Price
Soft Sea Foam Classic Stampin' Pad®			18-19	186	147102	\$7.50
Neutrals Stampin' Write® Markers			18-19	184	147158	\$30.00
Mossy Meadow						
Paper	Catalog*	Page	Item #	Price	Sizes	
Whisper White Thick card stock	18-19	192	140272	\$7.75	5 ½" x 8 ½"	
Whisper White					5" x 3 ¾"	
Whisper White					4" x 4"	
Whisper White					Scrap	
Soft Sea Foam card stock	18-19	186	146988	\$8.50	5 ¼" x 4"	
Soft Sea Foam					6" x 11"	
Whisper White Medium Envelopes	18-19	193	107301	\$7.00		
Embellishments	Catalog*	Page	Item #	Price	Quantity	
Whisper White Polka Dot Tulle	18-19	200	146912	\$7.50	5"	
Other Tools & Accessories			Catalog*	Page	Item #	Price
Suggested Blocks		18-19	206			
Clear Block A	118487	\$4.00	Clear Block F	118483	\$17.00	
Clear Block B	117147	\$6.00	Clear Block G	118489	\$4.50	
Clear Block C	118486	\$7.00	Clear Block H	118490	\$8.50	
Clear Block D	118485	\$8.50	Clear Block I	118488	\$12.00	
Clear Block E	118484	\$12.00	Bundle A-I	118491	\$71.50	
Stamperatus			18-19	207	146276	\$49.00
Adhesive of your choice				18-19	213	
Multipurpose Glue	110755	\$4.00	Tear & Tape	138995	\$7.00	
SNAIL Adhesive™	104332	\$7.00	Mini Glue Dots®	103683	\$5.25	
SNAIL Refill	104331	\$4.50	Fine-Tip Glue Pen	138309	\$7.00	
Stampin' Dimensionals®			18-19	213	104430	\$4.00
Big Shot™ Die-Cutting Machine			18-19	214	143263	\$110.00

*18-19 = Annual Catalog H = Holiday Mini Catalog O = Occasions Mini Catalog
 SAB = Sale-a-Bration Promotion Catalog (1 free item for each \$50 purchased products)

By Bev Adams, bevadams@verizon.net, www.BevAdams.com

Notes:

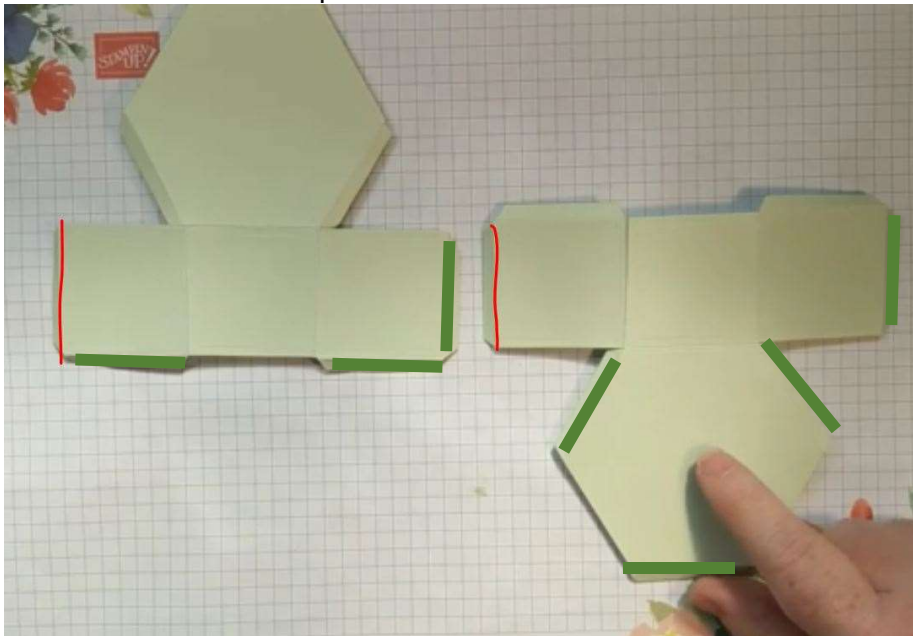
Card

- Score the 5 ½" x 8 ½" Thick Whisper White card stock at 4 ¼". Fold and crease for the card base.
- Spritz the 5 ¼" x 4" Soft Sea Foam with water, alcohol, or Stampin' Mist.
- Ink the Textured Impressions Embossing Folder with Soft Sea Foam ink.
 - Look for the side with Stampin' Up! and Sizzix printed on it. This side is a bit wider. I'm calling this the "top" side.
 - Open up the folder and ink the inside of the "top" side.
 - I simply rubbed the stamp pad over the folder. If your stamp pad is extra "juicy" you may get extra ink at the edges of the indented portions. You can avoid this by using a brayer to apply the ink.
- Set the 5" x 3 ¾" Thick Whisper White card stock on the "bottom" of the folder. Close the folder and roll through the Big Shot. Open it up and admire the gorgeousness!
- Ink the Happy Birthday stamp from Label Me Pretty with Soft Sea Foam ink. Color just the words with the Mossy Meadow marker. Stamp on the Thick Whisper White scrap. Punch this out with the Pretty Label punch.
- Adhere the 5 ¼" x 4" Soft Sea Foam to the card front.
- Adhere the embossed layer to the card front. I suggest Multipurpose Liquid Glue.
- Adhere the label to the card front with Stampin' Dimensionals. I positioned the label toward the bottom right side. This card looks great whether you use a portrait or landscape orientation.
- Tie a knot in the ribbon. Adhere just above and to the left of the label. I used a Mini Glue Dot.

Box

- Use the Big Shot and the Window Box Thinlits™ to cut 2 box pieces from the 6" x 11" Soft Sea Foam card stock. Use the same die to cut just the hexagon from the 4" x 4" Thick Whisper White card stock.
- Cut off all the tabs and box sides from the Whisper White piece, leaving just the hexagon. Set aside.

3. Fold and crease all of the score lines on both Soft Sea Foam pieces.
4. Note that one of the hex portions will be the top and one will be the bottom. When you assemble it, flip one of them. Trim off one tab on each piece as shown where the red lines are.



5. Add Tear & Tape Adhesive where the green lines are. Removing the adhesive backing from the two strips that will join the box sides. Fold any extra tape onto itself. Adhere to join all the sides together.
6. Adhere the bottom with Tear & Tape Adhesive on the tabs (three on the sides and two on the hex bottom).
7. Just close the lid. You may want to add a couple of Mini Glue Dots to just the tab opposite from the hinge.
8. I decided I wanted just a bit of the Soft Sea Foam to show around the top, so I trimmed off 1/8" around all six sides.
9. Use the same inking while embossing technique (step 3 of the card) on the Whisper White hex piece. Adhere to the box top.



Bev Adams - Independent Stampin' Up! Demonstrator

All images © Stampin' Up!

BevAdams@verizon.net BevAdams.com