

Express Your Elf Treat Box						
Stamp Sets		Catalog*	Page	Item #	Price	
Tags Tags Tags		H 19	56	150508	\$21.00	
Tags Tags Tags Bundle		H 19	56	153042	\$33.25	
Essential Tools & Accessories		Catalog*			Price	
Trio of Tags Dies		H 19	56	150667	\$16.00	
Stylish Scroll Embossing Folder		H 19	53	150665	\$7.50	
Delightful Tag Topper Punch		19-20	187	149518	\$23.00	
Ink		Catalog*	Page	Item #	Price	
Call Me Clover Classic Stampin' Pad®		19-20	164	147139	\$7.50	
Call Me Clover Stampin' Blends™ Dark		19-20	179	147024	\$4.50	
Real Red Stampin' Blends™ Dark		19-20	179	147934	\$4.50	
Paper		Catalog*	Page	Item #	Price	Sizes
Real Red card stock		19-20	163	102482	\$8.75	5 1/2" x 5 1/2"
Whisper White card stock		18-19	184	100730	\$9.75	1 1/2" x 2 1/2"
Embellishments		Catalog*	Page	Item #	Price	Quantity
Red Rhinestone Basic Jewels		19-20	178	146924	\$7.00	2
Real Red 1/8" (3.2 mm) Curly Ribbon		H 19	19	150426	\$7.00	4"
Whisper White Solid Baker's Twine		19-20	173	124262	\$3.50	8"
Favorite Tools & Accessories						
Suggested Blocks , page 182			Stamparatus		146276	\$49.00
Clear Block A	118487	\$4.00	Clear Block F	118483	\$17.00	
Clear Block B	117147	\$6.00	Clear Block G	118489	\$4.50	
Clear Block C	118486	\$7.00	Clear Block H	118490	\$8.50	
Clear Block D	118485	\$8.50	Clear Block I	118488	\$12.00	
Clear Block E	118484	\$12.00	Bundle A-I	118491	\$71.50	
Adhesives , page 183				19-20		
Multipurpose Glue	110755	\$4.00	Tear & Tape	138995	\$7.00	
SNAIL Adhesive™	104332	\$7.00	SNAIL Refill	104331	\$4.50	
Mini Glue Dots®	103683	\$5.25	Fine-Tip Glue Pen	138309	\$7.00	
Dimensionals®	104430	\$4.00	Mini Dimensionals	144108	\$4.00	

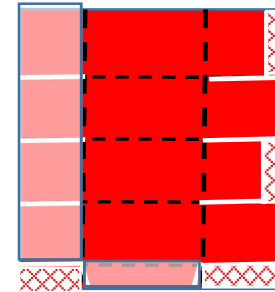
*19-20 = Annual Catalog H = Holiday Mini Catalog O = Occasions Mini Catalog

SAB = Sale-a-Bration Promotion Catalog (Level 1 is free for \$50 purchased products)

By Bev Adams, bevadams@verizon.net, www.BevAdams.com

Notes:

1. Score the Real Red card stock at 1 1/4", 2 1/2", 3 3/4", and 5". Turn and score at 1 1/4" and 3 3/4"
2. Crease all the score lines, shone with a dashed black line, with a Bone Folder.
3. Cut the creases as shown in white lines. Remove the rectangles as shown with the hash marks.



4. Fold accordion-style and place the right section into the punch. It will be a tight fit, but you should be able to get it in. You will actually be punching through just the two longer layers.
5. Place the piece in the embossing folder with the lighter sections outside of the folder so they are not embossed.
6. Place adhesive on the narrow light section, fold, and adhere.
7. Counting down from the top of the diagram, place adhesive on sections 1, 3, and 4. Fold in section 4, then 1 and 3, and finally 2 (the one without adhesive). This puts the fold without the paper edges on the front of the box. Another way to express this is to find the seam, place it so the open edge faces the back. Fold down the back section, then the sides, and finally the front goes back over all of the other sides.
8. Cut the Whisper White card stock with the center die in the Trio of Tags Dies.
9. Stamp Express your elf in Call Me Clover ink.
10. Color the shoes in Call Me Clover Stampin' Blends™.
11. Color alternate stripes in Real Red Stampin' Blends™.
12. Add a Red Rhinestone on the tips of the toes.
13. Fill the box with candy. I used Justin's White Chocolate Peanut Butter Cups. I bought a 4.7 oz bag with about 12 pieces in the bag at CVS, but they are available at Amazon. Three fit perfectly in the box.
14. Tie the Real Red Curly Ribbon in a knot around the tag topper holes.
15. Tie on the tag with the Whisper White Solid Baker's Twine.



Bev Adams Independent Stampin' Up! Demonstrator

All images © Stampin' Up!

BevAdams@verizon.net *BevAdams.com*