

**Project Planner**

Date: 4/22/21

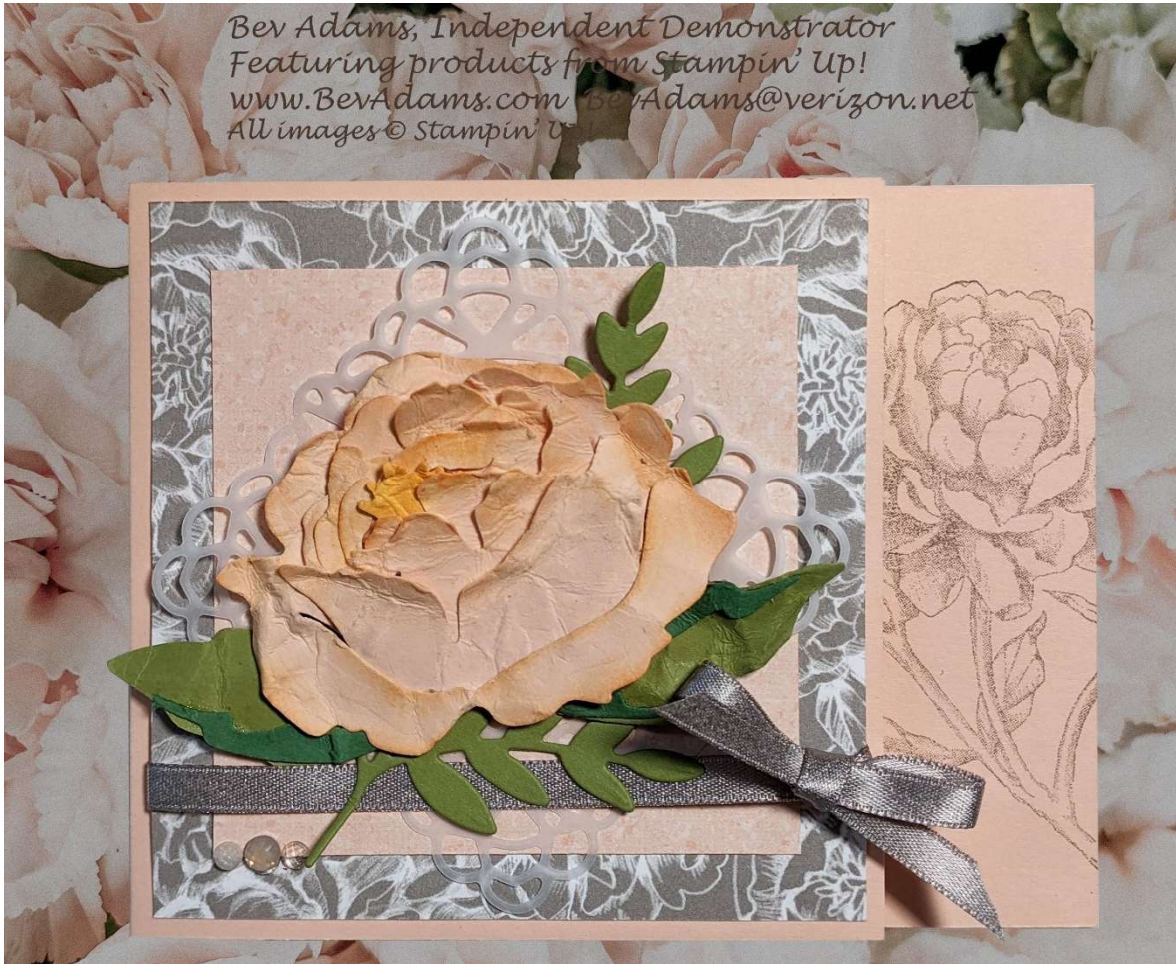
Peony Garden Showy Flower Card						
<b>Order from Stampin' Up!</b>		Catalog*	Page	Item #	Price	
Peony Garden Suite		20-21	82	154129	\$97.50	
Gray Granite Classic Stampin' Pad®		20-21	142	147118	\$7.50	
Petal Pink Classic Stampin' Pad®		20-21	143	147108	\$7.50	
Forever Flourishing Dies		20-21	175	152714	\$36.00	
Mini Stampin' Cut & Emboss Machine		20-21	170	150673	\$60.00	
Stampin' Mist Stamp Cleaner		20-21	163	153648	\$11.00	
<b>Consumables</b>		Catalog*	Page	Item #	Price	Sizes
Petal Pink card stock		20-21	143	146985	\$8.75	4 1/4" x 9 3/4"
Petal Pink						(2) 4 1/4" x 2 3/4"
Peony Garden DSP						4" x 4"
Peony Garden DSP						3 1/4" x 3 1/4"
Old Olive card stock		20-21	142	100702	\$8.75	4 1/4" x 2 3/4"
Garden Green card stock		20-21	142	102584	\$8.75	4 1/4" x 2 3/4"
Mango Melody card stock		20-21	142	146989	\$8.75	Tiny scrap
Gray Granite 1/4" (6.4 mm) Shimmer Ribbon						
Mini Glue Dots®		20-21	162	103683	\$5.25	
Sponge Daubers		20-21	147	133773	\$5.00	
Stampin' Dimensionals®		20-21	162	104430	\$4.00	12 or so
Basic White Medium Envelopes		20-21	153	159236	\$7.50	1
<b>Favorite Tools &amp; Accessories</b>						
<b>Suggested Blocks, page 163</b>			<b>Stamaparatus</b>		146276	\$49.00
Clear Block A	118487	\$4.00	Clear Block F	118483	\$17.00	
Clear Block B	117147	\$6.00	Clear Block G	118489	\$4.50	
Clear Block C	118486	\$7.00	Clear Block H	118490	\$8.50	
Clear Block D	118485	\$8.50	Clear Block I	118488	\$12.00	
Clear Block E	118484	\$12.00	Bundle A-I	118491	\$71.50	
<b>Adhesives, page 162</b>				20-21		
Multipurpose Glue	110755	\$4.00	Tear & Tape	138995	\$7.00	
Stampin' Seal	152813	\$8.00	Stampin' Seal Refill	152814	\$5.50	
Stampin' Seal+	149699	\$12.00	Stampin' Seal+ Refill	152812	\$8.00	
Mini Glue Dots®	103683	\$5.25	Fine-Tip Glue Pen	138309	\$7.00	
Dimensionals®	104430	\$4.00	Mini Dimensionals	144108	\$4.00	

\*20-21 = Annual Catalog, AD Mini = August-December Mini Catalog, JJ Mini = Jan-June Mini Catalog  
 BB= Beginner Brochure, SAB = Sale-a-Bration Brochure (Level 1 is free for \$50 purchased products)  
 By Bev Adams, [bevadams@verizon.net](mailto:bevadams@verizon.net), [www.BevAdams.com](http://www.BevAdams.com)

**Notes:**

- Score the 4 1/4" x 9 3/4" Petal Pink card stock at 5 1/2". Fold and crease for the card base.
- Stamp the large flower in Gray Granite ink on the right side of the 5 1/2" section. The flower itself should be basically centered in the 1/14" section of the card that will show when the card is closed.
- Adhere the 3 1/4" square of Designer Series Paper to the 4" square piece.
- Adhere a Square Vellum Doily at a diagonal, using 2-3 Stampin' Dimensionals just in the middle.
- Tie the ribbon around the Designer Series Paper with a small bow on the right side. Adhere to the card front.
- Adhere the large fern piece, if you're using it, over the Square Vellum Doily.
- Cut the four flower builder pieces from the small Petal Pink layer pieces.
- Cut the leaf pieces from the Old Olive card stock. Cut the leaf details from the Garden Green card stock. Cut the flower center from the Mango Melody card stock. If you do not have Mango Melody card stock, you can cut that piece from a Petal Pink scrap and sponge it with Mango Melody or another orange ink.
- Use a Sponge Dauber to highlight the upper edges of the flower builder pieces. Sponge the upper cut edges too.
- If you like the extra texture, spritz the flower and leaf pieces with Stampin' Mist, alcohol in a Stampin' Spritzer, or even just dip them under water for a second. Carefully and gently scrunch up the pieces. You can just crunch them or carefully and artfully ruffle the edges. Then even more gently, open them out flat. Allow to dry.
- Adhere the detailed edges to the larger leaf pieces. Set aside.
- Push the smallest of the flower builder pieces into the slot of the next size up, aligning the bottom edges. You may want to adhere each piece as you go with Mini Glue Dots. Repeat with each of the remaining flower builder pieces. Finish by adding the flower center.
- Adhere the leaves behind the flower with Mini Glue Dots or Multipurpose Liquid Glue.
- Add three of the Elegant Faceted Gems to the bottom left corner of the smaller piece of Designer Series Paper.

Bev Adams, Independent Demonstrator  
Featuring products from Stampin' Up!  
[www.BevAdams.com](http://www.BevAdams.com) [BevAdams@verizon.net](mailto:BevAdams@verizon.net)  
All images © Stampin' Up!



Flower builder pieces are circled in red. The tiny piece at the top is the flower center. There are three leaf pieces, each with a detailed layer.

