

Video posted 10/28/21 <https://bevadams.com/heartfelt-beauty>

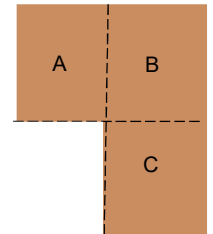
Heartfelt Beauty					
	Catalog*	Page	Item #	Price	
Beauty of Friendship Bundle	21-22	158	155834	\$52.00	
Heartfelt Wishes	J-D 21	57	156541	\$21.00	
Night of Navy Classic Stampin' Pad®	21-22	122	147110	\$7.50	
Mini Stampin' Cut & Emboss Machine	21-22	153	150673	\$60.00	
Consumables	Catalog*	Page	Item #	Price	Sizes
Cinnamon Cider Card Stock	21-22	123	153078	\$8.75	8 1/2" x 11"
Beauty of the Earth DSP	21-22	130	155841	\$11.50	4" x 5 1/4"
Beauty of the Earth					3" x 4"
Beauty of the Earth					3 3/4" x 4 1/4"
Beauty of the Earth					3 3/4" x 1 1/2"
Basic White card stock	21-22	136	159276	\$9.75	(2) 4" x 5 1/4"
Foam Adhesive Sheets	21-22	167	152815	\$8.00	3 1/2" x 4 3/4"
Adhesive Sheets	21-22	167	152334	\$10.00	3" x 4"
Baker's Twine Essentials Pack	21-22	140	155475	\$11.00	12"
Stampin' Dimensionals®	21-22	167	104430	\$4.00	12 or so
Basic White Medium Envelopes	21-22	136	159236	\$7.50	1
Favorite Tools & Accessories					
Suggested Blocks, page 145		Stamaparatus, p. 144		146276	\$49.00
Clear Block A	118487	\$4.00	Clear Block F	118483	\$17.00
Clear Block B	117147	\$6.00	Clear Block G	118489	\$4.50
Clear Block C	118486	\$7.00	Clear Block H	118490	\$8.50
Clear Block D	118485	\$8.50	Clear Block I	118488	\$12.00
Clear Block E	118484	\$12.00	Bundle A-I	118491	\$71.50
Adhesives, page 167				21-22	
Multipurpose Glue	110755	\$4.00	Tear & Tape	138995	\$7.00
Stampin' Seal	152813	\$8.00	Stampin' Seal Refill	152814	\$5.50
Stampin' Seal+	149699	\$12.00	Stampin' Seal+ Refill	152812	\$8.00
Mini Glue Dots®	103683	\$5.25	Fine-Tip Glue Pen	138309	\$7.00
Dimensionals®	104430	\$4.00	Mini Dimensionals	144108	\$4.00

\*21-22 = Annual Catalog, AD 21 = August-December Mini Catalog, JJ 21 = Jan-June Mini Catalog  
 SAB = Sale-a-Bration Brochure (Level 1 is free for \$50 purchased products)  
 By Bev Adams, [bevadams@verizon.net](mailto:bevadams@verizon.net), [www.BevAdams.com](http://www.BevAdams.com)

Notes:

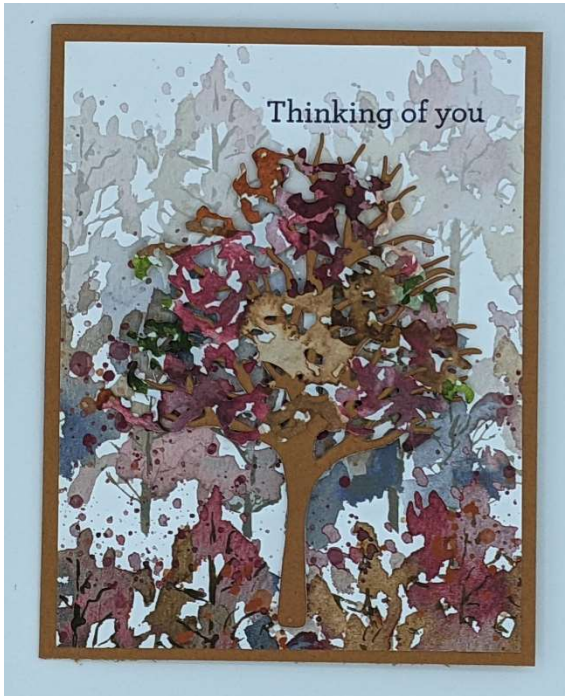
I designed four cards using the same elements: Two with a fancy fold and two using a basic card base. These directions are for the more simple fancy fold! I'll explain the three variations at the end.

- Score the Cinnamon Cider card stock at 4 5/16" and 5 1/2", basically in fourths with the tall left side 1/16" wider. Remove the bottom left section.
- Cut the 3 3/4" x 4 1/4" Designer Series Paper in half horizontally. (You could cut this at a slant, if desired.) Adhere the pieces to one of the 4" x 5 1/4" Basic White pieces, leaving a 3/4" gap. This will be **Panel B**.
- Adhere the strip of Designer Series Paper to the bottom of the other Basic White piece. This will be **Panel C**.
- Remove the backing from one side of the Foam Adhesive Sheet. Adhere the Cinnamon Cider card stock section removed in step 1. Cut with the large bare tree die.
- Remove the backing from one side of the Adhesive Sheet to the 3" x 4" Designer Series Paper. Cut with the open tree top die. Decide which way you want to position the treetop. Remove the backing and adhere to the tree branches. Leave the tree trunk and branches on for now.
- Cut the white Baker's Twine in half.
- Stamp the greeting from Heartfelt Wishes in Night of Navy ink in the 3/4" gap from **Panel B**. I used *much gratitude*.
- Stamp *Thinking of you* from Beauty of Friendship in Night of Navy ink to about 1/2" from the top right corner of the Beauty of the Earth Designer Series Paper. This will be **Panel D**.
- Open the card base all the way.
- Adhere about 1" of the twine to the middle of the right side of **Section B**. The twine should extend beyond the card. Adhere **Panel B** over the twine.
- Adhere **Panel C** to **Section C**. Fold **Section C** up, revealing **Section D**.
- Close the card.
- Adhere the other section of twine to the middle of the card front. Adhere **Panel D** to the card front over the twine. Tie the twine in a bow.



### Three alternatives

1. See directions for the more complex fancy fold card. This alternative has a frame for the card front, showing the panel with the tree through the frame.
2. Basic  $8\frac{1}{2}$ " x  $5\frac{1}{2}$ " card base, scored at  $4\frac{1}{4}$ ". **Panel D** on the card front. **Panel C** goes on the inside.
3. Basic  $8\frac{1}{2}$ " x  $5\frac{1}{2}$ " card base, scored at  $4\frac{1}{4}$ ". **Panel B** on the card front. **Panel C** goes on the inside.



Panel D



Panel B



Panel C