

Video posted 2/9/23 <https://bevadams.com/country-floral-lane>

Country Floral Lane Heart Box

	Catalog*	Page	Item #	Price
Country Bouquet Bundle	J-A 23	9	160383	\$37.75
Country Bouquet	J-A 23	10	160377	\$23.00
Country Bouquet Punch	J-A 23	10	160382	\$19.00
Mint Macaron Classic Stampin' Pad®	22-23	123	147106	\$8.00
Stitched Rectangles Dies	22-23	174	151820	\$35.00
Alphabet à la Mode Dies	J-A 23	61	160750	\$43.00
Stampin' Cut & Emboss Machine	22-23	157	149653	\$125.00

Candy. I used Hershey's Pink Cookies 'n' Creme Hearts

Consumables	Catalog*	Page	Item #	Price	Sizes
Mint Macaron card stock	22-23	123	138337	\$9.25	5½" x 8½"
Mint Macaron					3" x 2¼"
Window Sheets	22-23	140	142314	\$5.00	1¼" x 3¾"
Country Floral Lane DSP	J-A 23	9	160375	\$12.00	1¼" x 3⅞"
Country Floral Lane	With tiny white hearts				4" x 3¾"
Petal Pink Card Stock	22-23	123	146985	\$9.25	3" x 2¾"
Basic White card stock	22-23	140	159276	\$10.25	2⅞" x 2⅝"
Basic White					1¾" x 3"
Adhesive Sheets	22-23	127	152334	\$11.00	3" x 2¼"
Tear & Tape Adhesive	22-23	127	154031	\$7.00	
Stampin' Dimensionals®	22-23	127	104430	\$4.25	
Milky Dots	J-A 23	31	160582	\$8.00	
Real Red & Burlap Ribbon Combo Pack	J-A 23	9	160386	\$9.00	12"
Mini Glue Dots®	22-23	127	103683	\$5.25	

Favorite Tools & Accessories

Suggested Blocks, page 149			Stamparatus, p. 147	
Clear Block A	118487	\$4.50	Clear Block F	118483 \$18.00
Clear Block B	117147	\$6.50	Clear Block G	118489 \$5.00
Clear Block C	118486	\$7.50	Clear Block H	118490 \$9.00
Clear Block D	118485	\$9.00	Clear Block I	118488 \$12.50
Clear Block E	118484	\$12.50	Bundle A-I	118491 \$76.00

Adhesives, page 127

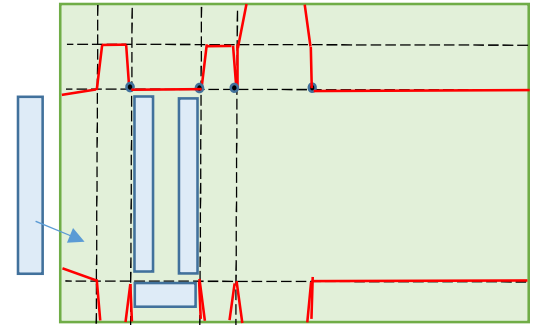
			22-23	
Multipurpose Glue	110755	\$4.00	Tear & Tape	154031 \$7.00
Stampin' Seal	152813	\$8.00	Stampin' Seal Refill	152814 \$5.50
Stampin' Seal+	149699	\$12.00	Stampin' Seal+ Refill	152812 \$8.00
Mini Glue Dots®	103683	\$5.25	Fine-Tip Glue Pen	138309 \$7.00
Dimensionals®	104430	\$4.25	Mini Dimensionals	144108 \$4.25

*22-23 = Annual Catalog, JA 23 = January-April Mini Catalog, Sale-a-Bration 23 = Sale-a-Bration Brochure (Level 1 is free for \$50 purchased products, Level 2 is free for \$100 purchased products.)By Bev Adams, bevadams@verizon.net, www.BevAdams.com

Notes:

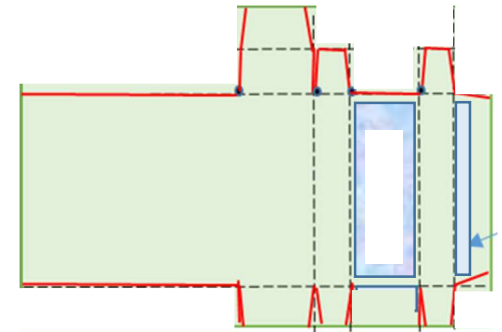
Prepare

1. With the Mint Macaron card stock in portrait, score at ½", 4 ½", and 5".
2. Turn counterclockwise so the 2 score lines are at the top. Score at ½", 1", 2 ⅜", and 2 ⅞". Score just from the inner score lines to the outside at 4 ¼". Fold and crease for the card base.
3. Cut the red lines as shown. Crease the score lines.
4. Add Tear & Tape Adhesive to the small flap and along the sides of the large section.
5. Turn the card stock over and add Tear & Tape Adhesive on the long flap.
6. Remove one side of the backing on the Adhesive Sheets and place on the 3" x 2¼" Mint Macaron piece.



Cut & Emboss

7. Adhere the 1¼" x 3⅞" Designer Series Paper to the wider section of the box.
8. Using the #11 Stitched Rectangle Die, cut out a window. On my original sample I cut the window near the top. I had to trim the box flap so it didn't show through the window.
9. Cut an I and a U from the side of the 3" x 2¼" Mint Macaron piece.



Stamp & Color

10. Stamp the large striped heart in Mint Macaron ink on the 1¼" x 3" Basic White piece. Punch.
11. Punch the same heart from the 3" x 2¼" Mint Macaron piece.
12. The 2⅞" x 2⅝" Basic White piece is nearly square. Turn it so that it is in landscape. Stamp the sprig in Mint Macaron ink in the lower left corner.

Assemble

13. Adhere the Window Sheet to the inside of the die-cut window.
14. Adhere the 4" x 3¾" Designer Series Paper (landscape) to the large side section.
15. Fold the long flap with the Tear & Tape Adhesive under.
16. Fold the large piece at the score line to the left of the window section. Remove the backing from the Tear & Tape Adhesive and adhere.

17. Lift the box section. Fold the small tabs at the bottom of the box in. Fold down the large flap. Remove the backing from the front section and adhere.
18. Fill the box with 3 candy hearts.
19. Tuck in the top tabs. Close the top and tuck in. If the tab shows through the window, trim the tab.
20. Adhere the Mint Macaron card stock heart to the center of the 2 7/8" x 2 5/8" Basic White piece. Adhere the I and the U on either side of the heart. Add the stamped heart over the card stock heart with Stampin' Dimensionals.
21. Adhere to the Petal Pink card stock. Adhere to the large section with Stampin' Dimensionals.
22. Tie an "air bow" with the Burlap Ribbon from the Real Red & Burlap Ribbon Combo Pack. Adhere to the bottom of the window with Mini Glue Dots.
23. Add a few white or Petal Pink Milky Dots, leaving a place to sign your name.

