

You Are Beautiful Tower Card					
	Catalog*	Page	Item #	Price	
You Are Beautiful	24-25	93	163704	\$24.00	
Countryside Corners Dies	24-25	122	161471	\$28.00	
Everyday Greetings	Available Online		165084	\$21.00	
Greetings of the Season	Available Online		164325	\$25.00	
Gorgeous Grape Classic Stampin' Pad®	24-25	137	147099	\$9.00	
Shaded Spruce Classic Stampin' Pad®	24-25	137	147088	\$9.00	
Wink of Stella® Clear Glitter Brush	Available Online		141897	\$9.00	
Mini Stampin' Cut & Emboss Machine	24-25	56	150673	\$66.00	
Stampin' Cut & Emboss Machine	24-25	56	149653	\$130.00	
Consumables	Catalog*	Page	Item #	Price	Sizes
Gorgeous Grape Card Stock	24-25	137	146987	\$11.50	8 1/4" x 5 1/2"
Highland Heather Card Stock	24-25	135	146986	\$11.50	(4) 7/8" x 5 3/8"
Highland Heather					(2) 4" x 7/8"
Highland Heather					4" x 1 3/8"
Highland Heather					2 1/8" x 5 3/8"
Highland Heather					3 1/4" x 4 3/4"
Perennial Lavender DSP	24-25	107	162593	\$12.50	(4) 3/4" x 5 1/4"
Perennial Lavender					(2) 3 7/8" x 3/4"
Perennial Lavender					3 7/8" x 1 1/4"
Basic White card stock	24-25	139	159276	\$13.00	2 3/4" x 4 1/4"
Basic White					2" x 5 1/4"
Stampin' Dimensionals®	24-25	16	104430	\$4.25	
Basic White Medium Envelopes	24-25	107	159236	\$8.50	1
Favorite Tools & Accessories					
<b>Clear Blocks, page 151</b>			Clear Block E	118484	\$13.00
Clear Block B	117147	\$7.00	Clear Block F	118483	\$19.00
Clear Block C	118486	\$8.00	Clear Block H	118490	\$9.50
Clear Block D	118485	\$9.50	Bundle	165674	\$59.25
<b>Adhesives, page 117</b>					
Multipurpose Glue	110755	\$6.00	Tear & Tape	154031	\$7.00
Stampin' Seal	152813	\$8.00	Stampin' Seal Refill	152814	\$6.00
Stampin' Seal+	149699	\$12.00	Stampin' Seal+ Refill	152812	\$8.00
Mini Glue Dots®	103683	\$7.25	Fine-Tip Glue Pen	138309	\$7.25
Dimensionals®	104430	\$4.25	Mini Dimensionals	144108	\$4.25

\*24-25 = Annual Catalog, JA 23 = January-April Mini Catalog, Sale-a-Bration 24 = Sale-a-Bration Brochure  
(Sale-a-Bration Level 1 is free for \$50 purchased products, Level 2 is free for \$100 purchased products.)

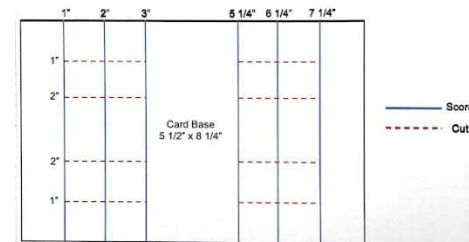
By Bev Adams, [bevadams@verizon.net](mailto:bevadams@verizon.net), [www.BevAdams.com](http://www.BevAdams.com)

## Notes:

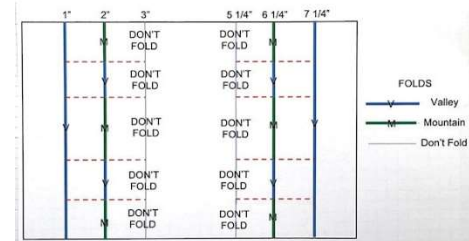
Card layout inspired by Mary Deatherage. I copied her diagram as well.

<https://stampsnlingers.com/2021/04/21/stampin-up-hand-penned-petals-sneak-peek-tower-fun-fold-card/>

1. With the Gorgeous Grape card stock in landscape, score at 1", 2", 3", 5 1/4", 6 1/4", and 7 1/4". Turn to portrait, cut between the two sections at 1", 2", 3 1/2", and 4 1/2" as shown below.



2. Fold the outside score lines as valley folds and then next score lines as mountain folds. Do not fold the two inside score lines. Pop the second from the top and bottom in the opposite direction.



3. Die cut the 2 3/4" x 4 1/4" Basic White card stock with the #3 Countryside Corners Die.
4. Die cut the 3 1/4" x 4 3/4" Highland Heather card stock with the #2 Countryside Corners Die.
5. Adhere the four 3/4" x 5 1/4" Designer Series Paper strips to the four 7/8" x 5 3/8" Highland Heather strips. Adhere to the outside panels of the card base, front and back.
6. Adhere the two 3 7/8" x 3/4" Designer Series Paper strips to the two 4" x 7/8" Highland Heather strips. Adhere to the top and bottom sections that are popped up on the front of the card.

7. Adhere the 3 $\frac{7}{8}$ " x 1 $\frac{1}{4}$ " Designer Series Paper strip to the 4" x 1 $\frac{3}{8}$ " Highland Heather strip. Adhere to the center section that is popped up on the front of the card.
8. Stamp the large image from You Are Beautiful in Shaded Spruce ink on the white Countryside Corner die-cut. I tipped it to the stem is pointed toward the bottom left diagonal edge and the tips of the leaves are close to the top and pointed a bit toward the opposite side edge. Adhere this to the Highland Heather die cut with Stampin' Dimensionals. Adhere to the center of the card front. I put about 2" of adhesive on the center section, the bottom of the top strip, and the top of the bottom section.
9. Stamp the greeting in Gorgeous Grape ink over the leaves at the bottom of the die-cut.
10. Stamp the small image from You are Beautiful in Shaded Spruce ink at the top of the 2" x 5 $\frac{1}{4}$ " Basic White strip. Stamp this same image on the envelope.
11. I stamped a second greeting in Gray Granite ink so that it's centered on the strip.

